

### DRAWING INDEX

C00	GENERAL INFORMATION SHEET
C10	SITE DEMOLITION PLAN
C20	EROSION AND SEDIMENT CONTROL PLAN
C40	GRADING AND SITE PLAN
C50	UTILITY PLAN

### SITE INFORMATION

PARCEL NO: RPT0001032006A  
 LEGAL: LOTS 6-18, 13-16 OF BLOCK 32; AND ALL OF BLOCKS 33 AND 44; OF TWIN FALLS TOWNSHIP LOCATED IN A PORTION OF THE NE 1/4 OF SECTION 16, 10512716 BOISE MERIDIAN, CITY OF TWIN FALLS, TWIN FALLS COUNTY, IDAHO

### VICINITY MAP



### EXISTING CONDITION INFORMATION

- CONTACT CIVIL SCIENCE (208-737-0007) FOR DATUM AND BENCHMARKS.
- THE LOCATION OF UNDERGROUND UTILITIES ARE SHOWN IN AN APPROXIMATE WAY ONLY. IT SHALL BE THE RESPONSIBILITY OF THE CONTRACTOR TO INFORM ALL UTILITY COMPANIES OF THE CONSTRUCTION SCHEDULE. THE CONTRACTOR SHALL DETERMINE THE EXACT LOCATION OF ALL EXISTING UTILITIES BEFORE COMMENCING WORK. THE CONTRACTOR IS RESPONSIBLE FOR ANY AND ALL DAMAGE WHICH MAY OCCUR BY FAILURE TO EXACTLY LOCATE AND PROTECT ALL UTILITIES.
- INFORMATION REGARDING EXACT LOCATION AND DEPTH OF STORM AND SANITARY SEWER ON SITE FOR PURPOSE OF DESIGN IS VERY LIMITED. CONTRACTOR TO VERIFY LOCATION AND DEPTH TO VERIFY DESIGN INTENT CAN BE MET AT PROJECT COMMENCEMENT AND INFORM THE ENGINEER IMMEDIATELY IF ALTERNATE SOLUTION(S) ARE NECESSARY.

### GENERAL NOTES

- FOR SPECIFICATIONS CONFORM TO THE CURRENT ADOPTED EDITION OF THE IDAHO STANDARDS FOR PUBLIC WORKS CONSTRUCTION (SPWC), THE CITY OF TWIN FALLS SPECIFICATION REVISIONS AND STANDARD DRAWINGS, AND THE IDAHO PLUMBING CODE UNLESS OTHERWISE NOTED.
- THE DRAWINGS INDICATE LOCATION, DIMENSIONS, REFERENCE, AND TYPICAL DETAILS OF CONSTRUCTION. THE DRAWINGS DO NOT INDICATE EVERY CONDITION - WORK NOT PARTICULARLY DETAILED SHALL BE OF CONSTRUCTION SIMILAR TO PARTS THAT ARE DETAILED.
- ALL LOT DIMENSION, EASEMENTS AND CERTAIN OFF-SITE EASEMENTS ARE TO BE TAKEN FROM THE PLAT.
- DO NOT SCALE DRAWINGS.
- FIGURED DIMENSIONS TAKE PRECEDENCE OVER SCALED DRAWINGS. WHERE DISCREPANCIES OCCUR, THEY SHALL BE REPORTED TO THE ENGINEER FOR RESOLUTION.
- DETAILED DRAWINGS AND LARGER SCALE DRAWINGS TAKE PRECEDENCE OVER SMALLER SCALE DRAWINGS (E 1"=10' TAKES PRECEDENCE OVER 1"=100').
- THE CONTRACTOR(S) SHALL REMOVE ALL OBSTRUCTIONS BOTH ABOVE AND BELOW GROUND, AS REQUIRED FOR THE CONSTRUCTION OF THE PROPOSED IMPROVEMENTS. THIS SHALL INCLUDE CLEANING AND GRUBBING WHICH CONSISTS OF CLEARING THE GROUND SURFACE OF ALL TREES, STUMPS, BRUSH, UNDERGROWTH, HEDGES, HEAVY GROWTH OF GRASS OR WEEDS, FENCES, STRUCTURES, DEBRIS, RUBBISH, AND SUCH MATERIAL WHICH, IN THE OPINION OF THE ENGINEER, IS UNSUITABLE FOR THE FOUNDATION OF PAVEMENTS. ALL MATERIAL NOT SUITABLE FOR FUTURE USE ON SITE SHALL BE DISPOSED OF OFF SITE.
- THE CONTRACTOR SHALL MAINTAIN ALL DRAINAGE FACILITIES WITHIN THE CONSTRUCTION AREA UNTIL THE DRAINAGE IMPROVEMENTS ARE IN PLACE AND FUNCTIONING.
- ALL CONTRACTORS WORKING WITHIN THE PROJECT BOUNDARIES ARE RESPONSIBLE FOR COMPLIANCE WITH ALL APPLICABLE SAFETY LAWS OF ANY JURISDICTIONAL BODY. THE CONTRACTOR SHALL BE RESPONSIBLE FOR BARRICADES, SAFETY DEVICES AND CONTROL OF TRAFFIC WITHIN AND AROUND THE CONSTRUCTION AREA.
- ALL AC PAVEMENT SHALL BE CUT TO A NEAT STRAIGHT LINE PARALLEL OR PERPENDICULAR TO THE STREET CENTERLINE AND THE EXPOSED EDGE SHALL BE TRACKED WITH EMULSION PRIOR TO PAVING.
- THE CONTRACTOR(S) SHALL KEEP ALL AREAS OF CONSTRUCTION CLEAN AND FREE OF DEBRIS. AFTER CONSTRUCTION IS COMPLETE, THE GENERAL CONTRACTOR SHALL PROVIDE FINAL CLEAN UP.
- THE CONTRACTOR SHALL VERIFY ALL EXISTING CONDITIONS AND DIMENSIONS FOR ACCURACY PRIOR TO COMMENCING WITH THE WORK. ANY DISCREPANCY SHALL BE BROUGHT TO THE ATTENTION OF THE ENGINEER.
- THE CONTRACTOR SHALL CALL DIGLINE (208-342-1585) AND HAVE THE LOCATION OF EXISTING UTILITIES MARKED AT LEAST TWO WORKING DAYS PRIOR TO THE BEGINNING OF EXCAVATION. CONTACT OTHER UTILITY OWNERS WHICH DIGLINE DOES NOT MARK, TO HAVE THEM LOCATE THEIR FACILITIES.
- WHERE NO MATERIAL NOTES OCCUR, THE GRAPHIC MATERIAL INDICATION SHALL INDICATE MATERIAL TYPES AND ITEMS. SEE LEGEND ON THIS SHEET.
- ALL NEW CONSTRUCTION TO COMPLY WITH THE AMERICANS WITH DISABILITIES ACT ACCESSIBLE GUIDELINES (A.D.A.A.G.).
- UNLESS OTHERWISE INDICATED ALL DRAWINGS, NOTES WHICH DO NOT READ "N.C.", "EXISTING", "EXISTING TO REMAIN", OR "BY OTHERS" SHALL INDICATE NEW WORK WHICH SHALL BE CONTRACTOR FURNISHED AND CONTRACTOR INSTALLED.
- ALL MATERIALS FURNISHED ON OR FOR THE PROJECT MUST MEET THE MINIMUM REQUIREMENTS OF THE APPROVING AGENCIES OR AS SET FORTH HEREIN, WHICHEVER IS MORE RESTRICTIVE. CONTRACTORS MUST FURNISH PROOF THAT ALL MATERIALS INSTALLED ON THIS PROJECT MEET THIS REQUIREMENT IF REQUESTED BY THE AGENCY OR THE ENGINEER.
- ALL COSTS OF RETESTING PREVIOUSLY FAILED TESTS SHALL BE BACK CHARGED TO THE CONTRACTOR BY THE OWNER.
- ALL COSTS INCURRED IN CORRECTING DEFICIENT WORK SHALL BE TO THE CONTRACTOR. FAILURE TO CORRECT SUCH WORK WILL BE CAUSE FOR A STOP WORK ORDER AND POSSIBLE TERMINATION.
- THE CONTRACTOR IS RESPONSIBLE FOR PREPARING THE STORM WATER POLLUTION PREVENTION PLAN (SWPPP) AND FILING THE NOTICE OF INTENT (NOI) PRIOR TO ANY CONSTRUCTION.
- IF FIELD GRADE ADJUSTMENTS ARE REQUIRED, THE CONTRACTOR SHALL NOTIFY THE ARCHITECT/ENGINEER. ANY CHANGE FROM THE PLANS SHALL BE APPROVED BY THE ENGINEER OF RECORD.
- CONTRACTOR SHALL WORK FROM AND HAVE ON SITE AT ALL TIMES ONLY STAMPED, AGENCY APPROVED, DRAWINGS FOR THIS PROJECT.
- MANHOLE LIDS AND DRAINAGE STRUCTURES SHALL BE HS-25 TRAFFIC RATED. LIDS SHALL BE NAMED WITH THE APPROPRIATE UTILITY NAME, I.E. ELECTRICAL, TELEPHONE, ETC.
- EQUIPMENT AND MATERIALS SHALL BE INSTALLED IN ACCORDANCE WITH THE MANUFACTURER'S RECOMMENDATIONS AND SPECIFICATIONS.
- IF A CONFLICT EXISTS BETWEEN THE PLANS, SPECIFICATIONS, OR SOILS REPORT, THE CONTRACTOR SHALL CONTACT THE ENGINEER FOR CLARIFICATION PRIOR TO CONSTRUCTION.
- SEE LANDSCAPE DRAWINGS FOR LAWN, SHRUB AND TREE PLANTING AND IRRIGATION SYSTEM.
- SEE SITE ELECTRICAL PLAN FOR SITE LIGHTING, POWER, AND COMMUNICATION
- THE CONTRACTOR SHALL SUBMIT A SET OF RECORD DRAWINGS TO THE ENGINEER OF RECORD WITHIN FIVE WORKING DAYS AFTER THE COMPLETION OF WORK. RECORD DRAWINGS SHALL BE IN ACCORDANCE WITH AIA SPECIFICATIONS.
- SITE GRADING AND PREPARATION, PAVEMENT THICKNESSES, AND MATERIAL SPECIFICATIONS SHALL CONFORM TO THE RECOMMENDATIONS OF THE SOILS REPORT FOR THIS SITE PREPARED BY STRAIN, DATED AUGUST 3, 2022, MAKING STRATA FILE NUMBER TF211698, AND TITLED "GEO-TECHNICAL ENGINEERING EVALUATION REPORT, THERON W. WARD JUDICIAL BUILDING REMODEL AND EXPANSION WITH PUBLIC HEALTH, SAFETY AND TECHNOLOGICAL UPGRADES TO PREVENT OR CONTROL THE SPREAD OF INFECTIOUS DISEASE, TWIN FALLS, IDAHO" AND ALL ADDENDA TO THE SOILS REPORT.
- CONTRACTOR SHALL OBTAIN ALL PERMITS NECESSARY TO COMPLETE HIS WORK.

### ABBREVIATIONS

AB	AGGREGATE BASE
AC	ASPHALT CONCRETE
ASH	ASPHALT
AWWA	AMERICAN WATER WORKS ASSOCIATION
BFTG	BOTTOM OF FOOTING
BLDG	BUILDING
BTM	BOTTOM
CL	CENTERLINE
C	CURVE
CB	CATCH BASIN
CS/SB	CATCH BASIN/SEDIMENT BOX
CONC	CONCRETE
CSP	CORRUGATED STEEL PIPE
DEPT	DEPARTMENT
DEQ	DEPARTMENT OF ENVIRONMENTAL QUALITY
DESC	DESCRIPTION
DIAM	DIAMETER
E	ELECTRICAL / EAST / EASTING
EG	EXISTING GRADE
ELEV	ELEVATION
ELW	ELBOW
EDP	EDGE OF PAVEMENT
EST	ESTIMATE
EW	EACH WAY
FDC	FIRE DEPARTMENT CONNECTION
FF	FINISH FLOOR ELEVATION
FG	FINISHED GRADE
FH	FIRE HYDRANT
FL	FLOWLINE
FDC	FACE OF CURB
FT	FEET
G	GAS
GALS	GALLONS
GALE	GALVANIZED
GB	GRADE BREAK
GFE	GOVERNMENT FURNISHED EQUIPMENT
GPD	GALLONS PER DAY
GRND	GROUND
GRVL	GRAVEL
GRT	TOP OF GRATE
HDPE	HIGH DENSITY POLYETHYLENE
IE	INVERT ELEVATION
IN	INVERT
L	LENGTH / LINE
LF	LINEAR FEET
MAX	MAXIMUM
MH	MANHOLE
MIN	MINIMUM
MUTFD	MANUAL ON UNIFORM TRAFFIC CONTROL DEVICES
N	NORTH / NORTHING
NO	NUMBER
NTS	NOT TO SCALE
OC	ON CENTER
OWS	OIL WATER SEPARATOR
PC	POINT OF CURVATURE
PCC	PORTLAND CEMENT CONCRETE
PE	POLYETHYLENE
PERF	PERFORATED
PV	POST INDICATOR VALVE
PL	PROPERTY LINE
PRC	POINT OF REVERSE CURVATURE
PS	PRESSURIZED SEWER
PT	POINT OF TANGENCY
PVC	POLYVINYL CHLORIDE
PWMT	PAVEMENT
QUAN	QUANTITY
R	RADIUS
RE	REFER TO
ROW	RIGHT OF WAY
S	SOUTH
SCH	SCHEDULE
SD	STORM DRAIN
SDCO	STORM DRAIN CLEANOUT
SDMH	STORM DRAIN MANHOLE
SDWKL	SQUARE WALK
SQ FT	SQUARE FEET
SS	SANITARY SEWER
SSCO	SANITARY SEWER CLEANOUT
SDMH	SANITARY SEWER MANHOLE
T	TELEPHONE
TBC	TOP BACK OF CURB
TC	TOP OF CONCRETE
TD	TRENCH DRAIN
TDH	TOTAL DYNAMIC HEAD
TMS	TOP OF MOUNTABLE CURB
TOC	TOP OF CURB
TOW	TOP OF WALL
TYP	TYPICAL
W	WATER / WEST
W/	WITH
WV	WATER VALVE

### LEGEND

	ASPHALT CONCRETE PAVEMENT
	PORTLAND CEMENT CONCRETE
	RIGHT OF WAY LINE
	PROPERTY LINE
	EASEMENT LINE
	FINISH GRADE CONTOUR (MAJOR)
	FINISH GRADE CONTOUR (MINOR)
	EXISTING GRADE CONTOUR (MAJOR)
	FENCE
	BUILDING
	INFLOW CURB AND GUTTER
	OUTFLOW CURB AND GUTTER
	PARKING COUNT
	ACCESSIBLE PARKING SYMBOL
	SIGN
	BIKE RACK
	LUMINAIRE
	ELECTRICAL TRANSFORMER
	STORM WATER LINE
	STORM WATER MANHOLE
	STORM WATER CLEANOUT
	CATCH BASIN
	OIL WATER SEPARATOR
	HEADWALL
	SANITARY SEWER LINE
	SANITARY SEWER MANHOLE
	SANITARY SEWER CLEANOUT
	WATER LINE
	WATER METER
	WATER VALVE
	FIRE HYDRANT
	GAS LINE
	COMMUNICATION LINE
	ELECTRICAL LINE



JEFF T. WARD, P.E.  
 200 BROAD STREET  
 BOISE, ID 83702  
 PHONE: 208-343-4635 • FAX: 208-343-1658  
 WWW: www.cshoa.com

427 Shoshone St N Twin Falls, ID  
 (208) 343-4635  
 www.cshoa.com

THERON W. WARD JUDICIAL BUILDING  
 REMODEL & EXPANSION  
 CSHOA

AGENCY REVIEW SET

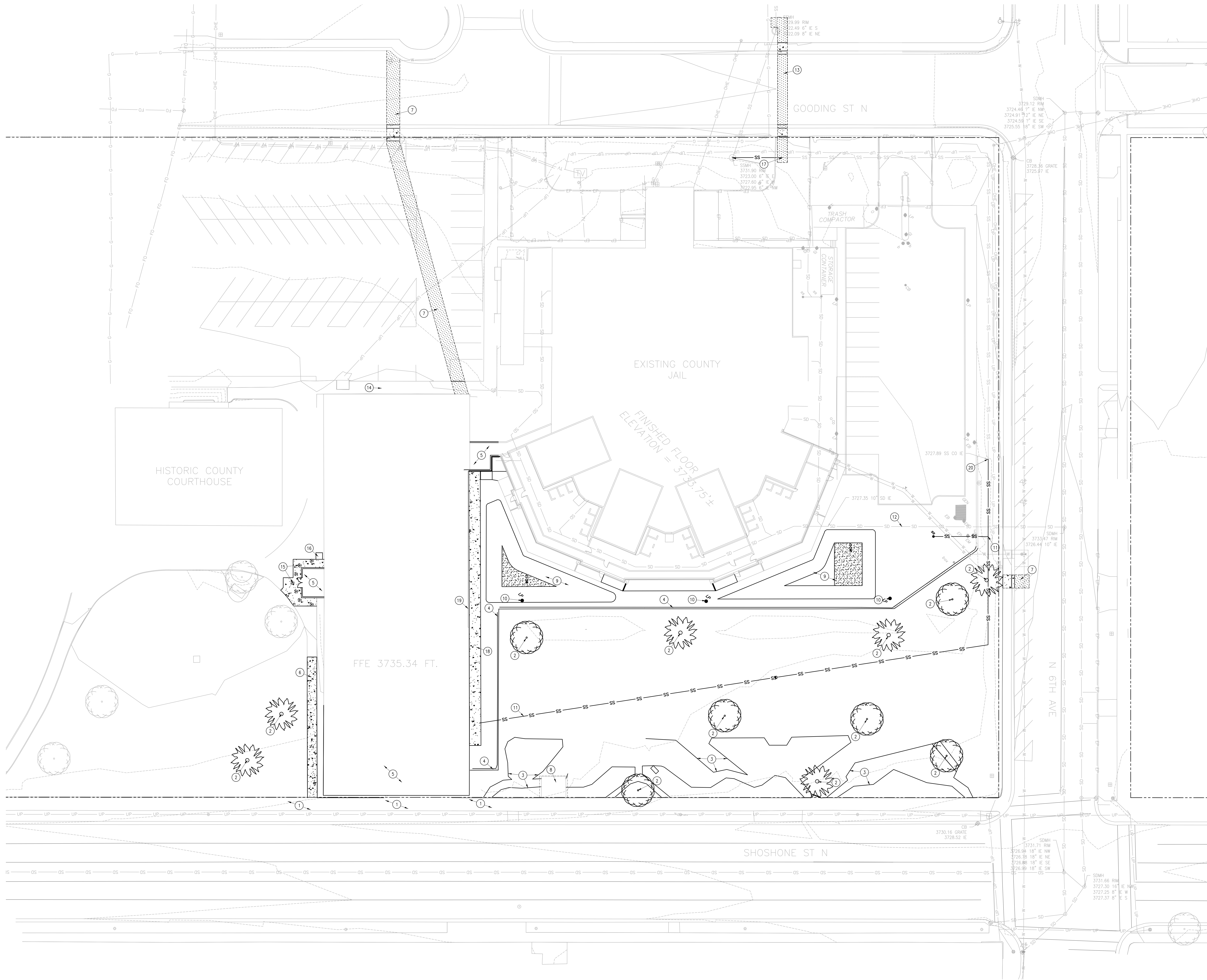
PROJECT	DATE
21403.000	03-31-23
DRAWN	CHECKED
JTW	JTW

REVISED

SHEET TITLE  
 GENERAL INFORMATION SHEET

SHEET

C00  
 ORIGINAL SHEET SIZE  
 36" x 48"



**GENERAL NOTES:**

A. SEE SHEET C00 FOR GENERAL NOTES.

**DEMOLITION NOTES:**

- A. EXISTING SITE INFORMATION AND LOCATION OF EXISTING SITE IMPROVEMENTS ARE PROVIDED BY MULTIPLE SOURCES. CONTRACTOR SHALL BE RESPONSIBLE FOR VERIFYING AND LOCATING ALL EXISTING UTILITIES PRIOR TO DEMOLITION AND EXCAVATION. COORDINATE WITH UTILITY COMPANIES AND ARCHITECT/ENGINEER FOR SCHEDULING OF DISCONNECTION AND FOR CAPPING PROCEDURES. COORDINATE ALL DISRUPTIONS WITH UTILITY SERVICES WITH ARCHITECT AND ADJACENT BUSINESSES THREE DAYS PRIOR TO SCHEDULED DISRUPTION.
- B. THE CONTRACTOR SHALL CALL DIGLINE (1-800-343-1885) AND HAVE THE LOCATION OF EXISTING UTILITIES MARKED AT LEAST TWO WORKING DAYS PRIOR TO THE BEGINNING OF EXCAVATION.
- C. TYPE AND LOCATION OF EXISTING UTILITIES SHOWN IS BASED ON BEST AVAILABLE INFORMATION. CONTRACTOR SHALL BE RESPONSIBLE FOR VERIFYING AND LOCATING ALL EXISTING UTILITIES PRIOR TO DEMOLITION AND EXCAVATION. COORDINATE WITH UTILITY COMPANIES AND ARCHITECT/ENGINEER FOR SCHEDULING OF DISCONNECTION AND FOR CAPPING PROCEDURES. COORDINATE ALL DISRUPTIONS WITH UTILITY SERVICES WITH ARCHITECT AND ADJACENT BUSINESSES THREE DAYS PRIOR TO SCHEDULED DISRUPTION.
- D. REMOVE ALL LOOSE SOIL FROM AREAS OF EXCAVATION AND FILL WITH APPROVED BACKFILL.
- E. DURING ALL PHASES OF DEMOLITION AND CONSTRUCTION, PRECAUTION SHALL BE TAKEN NOT TO INCARCENATE ADJOINING ENTRIES AS REASONABLY POSSIBLE AND TO MAINTAIN UNINTERRUPTED ACCESS.
- F. DEMOLITION CONTRACTOR SHALL OBTAIN ALL PERMITS NECESSARY TO COMPLETE HIS WORK. IN ADDITION, DEMOLITION CONTRACTOR SHALL OBTAIN ALL CERTIFICATES OF SEVERANCE OF ALL UTILITY SERVICES AS PART OF HIS WORK AND SUBMIT TO THE ARCHITECT/ENGINEER HIS DEMOLITION PROCEDURES AND OPERATIONAL SEQUENCE FOR APPROVAL.
- G. CONTRACTOR SHALL PROVIDE PROPER CONSTRUCTION SIGNAGE/BARRICADES AT ROADWAYS AND APPROACHES IN ACCORDANCE WITH MANUAL ON UNIFORM TRAFFIC CONTROL DEVICES (MUTCD), OAHQ TRANSPORTATION DEPARTMENT, AND CITY OF TWIN FALLS REQUIREMENTS.
- H. EXISTING TREES, DERRIS, STRUCTURES, ASPHALT, CONCRETE, AND DELETERIOUS MATERIAL INCLUDING BUT NOT LIMITED TO CONCRETE FOOTINGS, BASEMENTS, SEPTIC TANKS AND UNDERGROUND UTILITIES TO BE REMOVED SHALL BE DISPOSED OF OFF-SITE AT THE CONTRACTOR'S EXPENSE. THE DEPRESSIONS LEFT BY REMOVAL SHALL BE BACKFILLED WITH CLEAN ENGINEERED FILL IN LAYERS NOT TO EXCEED 8 INCHES.
- I. THE CONTRACTOR SHALL COMPLETELY REMOVE THE EXISTING PAVED AREAS SPECIFIED. IN ADDITION, CONTRACTOR SHALL REMOVE UNDERGROUND UTILITIES AS IDENTIFIED ON THESE DRAWINGS, IN ACCORDANCE WITH ALL APPLICABLE AUTHORITIES HAVING JURISDICTION AND IN AN EXPEDITIOUS MANNER. COORDINATE REMOVAL AND CONSTRUCTION OF UTILITIES TO MAINTAIN UNINTERRUPTED SERVICE TO EXISTING FACILITIES.
- J. THIS PLAN SHOWS GENERAL DEMOLITION WORK TO BE PERFORMED AND DOES NOT RELIEVE THE CONTRACTOR FROM OTHER DEMOLITION WORK REQUIRED TO PRODUCE THE SITE MODIFICATIONS SHOWN ON THE REMAINING CONTRACT DOCUMENTS.
- K. AREAS INDICATED ASPHALT OR CONCRETE REMOVAL SHALL INCLUDE REMOVAL OF THE PAVEMENT SECTION FROM THE ASPHALT SURFACE DOWN TO EXISTING SUBGRADE.
- L. DEMOLITION OF LIGHT POLES, ELECTRICAL CONDUIT AND UNDERGROUND UTILITIES SHALL NOT INTERFERE WITH THE OPERATION OF EXISTING LIGHTING, ELECTRICAL SYSTEM OR UTILITIES REMAIN. TEMPORARY REPAIRING OF LINES MAY BE REQUIRED TO ENSURE CONTINUOUS OPERATION OF THOSE SYSTEMS NOT SCHEDULED FOR DEMOLITION.
- M. ALL ASPHALT CUTS AND REPAIR SHALL BE PER ICPWC SD-301 AND SD-303.
- N. EXISTING UNDERGROUND UTILITIES WITHIN THE LIMITS OF THE BUILDING FOOTPRINT, OR WITHIN 2' OF THE BOTTOM OF EXCAVATION, SHALL BE REMOVED. UTILITIES TO BE DEMOLISHED BEYOND 2' BELOW SUBGRADE SHALL BE REMOVED OR ABANDONED IN PLACE AT THE CONTRACTOR'S EXPENSE. PIPES, CONDUIT, AND UTILITY LINES 6" OR LARGER SHALL BE GROUTED WITH CONCRETE MORTAR AND ABANDONED IN PLACE.
- O. ALL WORK IN THE PUBLIC ROW REQUIRES PERMITS FROM THE AUTHORITY HAVING JURISDICTION.
- P. PART OF THE EXISTING CONNECTION TO THE EXISTING JAIL FACILITY IS TO BE DEMOLISHED AS SHOWN. THE JAIL REMAINS ACTIVE AND PROPER SECURITY PRECAUTIONS MUST BE TAKEN AT ALL TIMES TO ENSURE THAT THE SECURITY OF THE AREA IS NOT COMPROMISED.

**# SHEET NOTES:**

- 1. REMOVE SIDEWALK AS REQUIRED FOR PROPOSED BUILDING FOOTINGS. SAWCUT AT EXISTING JOINT AND REMOVE COMPLETE PANELS. SIDEWALK IS LOCATED IN ROAD TRANSPORTATION DEPARTMENT (OTD) ROW. CONTRACTOR TO OBTAIN NECESSARY PERMIT FOR SIDEWALK REMOVAL AND REPLACEMENT ACCORDING TO OTD REQUIREMENTS PRIOR TO CONSTRUCTION COMMENCEMENT.
- 2. EXISTING TREE TO BE REMOVED BY COUNTY PARKS DEPARTMENT PRIOR TO PROJECT CONSTRUCTION COMMENCEMENT.
- 3. EXISTING LANDSCAPE CURB TO BE REMOVED BY COUNTY PARKS DEPARTMENT PRIOR TO PROJECT CONSTRUCTION COMMENCEMENT.
- 4. EXISTING FENCE TO BE REMOVED. CONTRACTOR OPTION TO RETAIN FOR REUSE IN NEW LOCATION, RE: C40 AND A50-1. TEMPORARY CONSTRUCTION FENCING ADEQUATE FOR SECURE YARD TO BE PLACED PER GENERAL CONDITIONS.
- 5. SEE ARCHITECTURAL DRAWINGS FOR DEMOLITION ASSOCIATED WITH BUILDING FEATURES.
- 6. EXISTING SIDEWALK TO BE REMOVED.
- 7. REMOVE EXISTING SIDEWALK, CURB AND GUTTER, AND PAVEMENT AS REQUIRED FOR NEW WATER CONNECTIONS, RE: C50.
- 8. EXISTING SIGN FOOTING AND STRUCTURE TO REMAIN AND BE PROTECTED.
- 9. EXISTING SWALE WITH DRAINAGE WINDOW TO BE REMOVED. STORAGE VOLUME TO BE CONSIDERED IN NEW GROUND FACILITY, RE: C40 AND C50. CONTRACTOR TO RETAIN DECORATIVE ROCK ABOVE LANDSCAPE FABRIC FOR PLACEMENT IN SAME AREA WHEN PROJECT GRADING IS COMPLETE.
- 10. EXISTING LIGHT POLE WITH JAIL CAMERAS AND ASSOCIATED APPURTENANCES TO BE REMOVED. CAMERAS TO BE REMOVED IN USABLE CONDITION AND RETURNED TO OWNER FOR STOCK.
- 11. APPROXIMATE LOCATION OF THE PORTION OF EXISTING SANITARY SEWER SERVICE TO BE REMOVED ONCE THE EXISTING 1990s ADDITION TO THE JUDICIAL BUILDING IS TAKEN OUT OF SERVICE. FIELD VERIFY INVERT IN JAIL. ADDITIONAL AREA IS ADEQUATE FOR GRAVITY CONNECTION FROM NEW BUILDING. ADDITION AS INDICATED ON C50.
- 12. APPROXIMATE LOCATION OF EXISTING STORM DRAIN CONVEYING ROOF DRAINAGE FROM EXISTING JUDICIAL BUILDING TO PUBLIC MAIN IN 6TH. FIELD VERIFY INVERT IS ADEQUATE FOR GRAVITY CONNECTION FROM REMODELED BUILDING AS INDICATED ON C50.
- 13. REMOVE EXISTING SIDEWALK, CURB AND GUTTER, AND PAVEMENT AS REQUIRED TO INSTALL 6" SEWER LINE, RE: C50.
- 14. APPROXIMATE LOCATION OF EXISTING WATER METER ASSOCIATED WITH EXISTING 6" COMBINED FIRE AND WATER SERVICE LINE TO BE ABANDONED AND CAPPED AT THE ISOLATION VALVE AT THE PUBLIC MAIN. COORDINATE EXACT REQUIREMENTS WITH TWIN FALLS WATER DEPARTMENT.
- 15. EXISTING BOLLARDS AND BASES TO BE REMOVED. TYPICAL OF SEVEN. REMOVE FULL CONCRETE SIDEWALK PANELS AS REQUIRED TO REMOVE BOLLARDS AND BASES. SEE C40 FOR NEW CONCRETE SIDEWALK.
- 16. EXISTING PHONE BOOTH IN THIS AREA TO BE REMOVED BY COUNTY.
- 17. PORTION OF EXISTING SANITARY LINE TO BE CAPPED AND ABANDONED IN PLACE, RE: C50 FOR NEW CONNECTION TO CROSS GOODING ST. PLUS ABANDONED INLET TO MANHOLE.
- 18. SIDEWALK, FENCING, AND COVER TO BE REMOVED.
- 19. JAIL CAMERA MOUNTED TO EXISTING BUILDING. CAMERA TO BE REMOVED IN USABLE CONDITION AND RETURNED TO OWNER FOR STOCK.
- 20. LOCATION OF CLEAN OUT INVERT PROVIDED BY CIVIL SCIENCE VIA EMAIL ON 3/31/23.

**1 SITE DEMOLITION PLAN**  
SCALE: 1" = 20'  
SCALE IN FEET



**JEFF T. WARD, P.E.**  
200 BROAD STREET  
BOISE, ID 83702  
(208) 343-4635  
http://www.cshoa.com

**427 Shoshone St N Twin Falls, ID**

**THERON W. WARD JUDICIAL BUILDING  
REMODEL & EXPANSION**



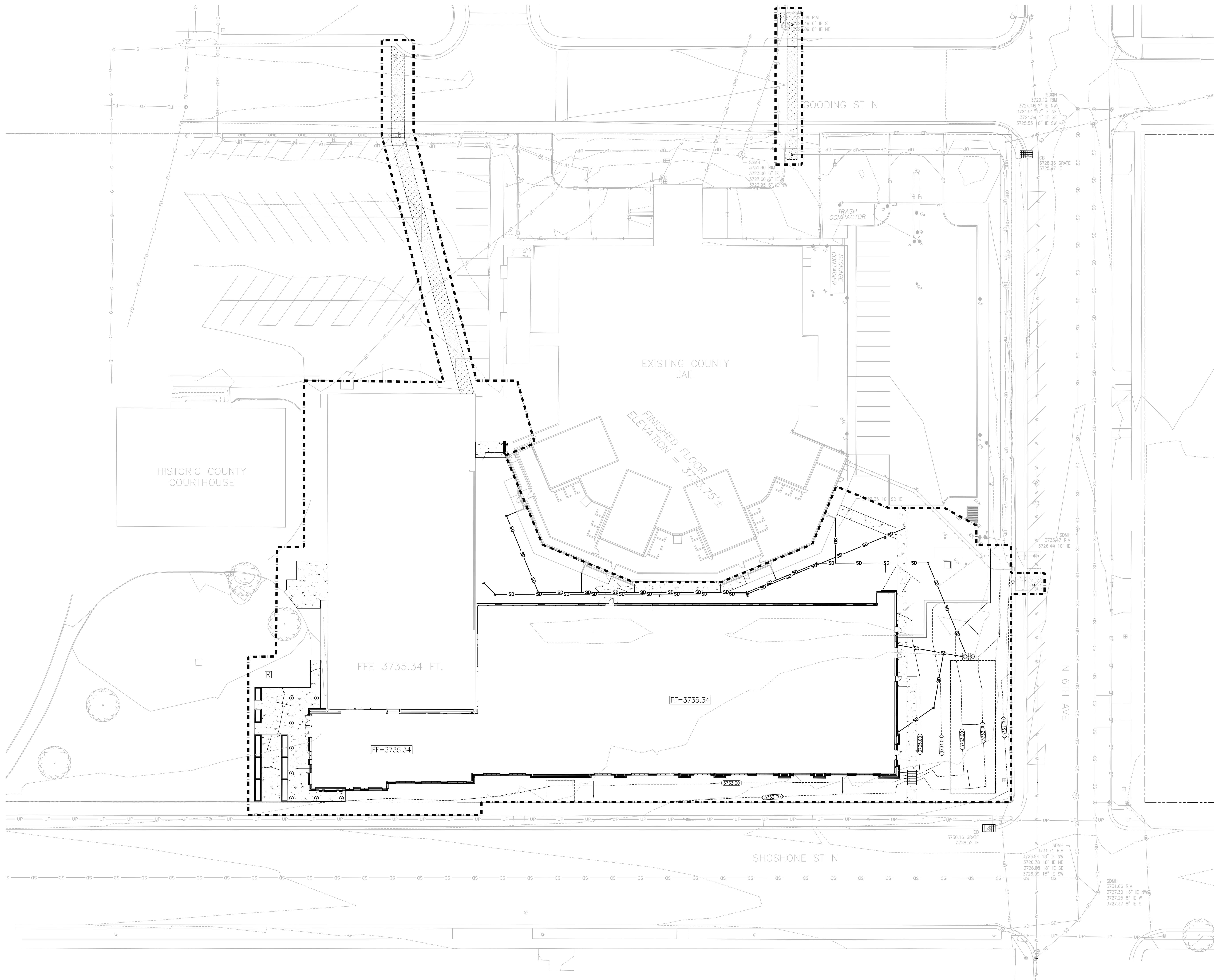
**AGENCY  
REVIEW SET**

PROJECT	DATE
21403.000	03-31-23
DRAWN	CHECKED
JTW	JTW
REVISED	

SHEET TITLE  
**SITE  
DEMOLITION  
PLAN**

SHEET

**C10**  
ORIGINAL SHEET SIZE  
36" x 48"



### SEDIMENT CONTROL NOTES

- A. ALL WORK ASSOCIATED WITH STABILIZING THE DISTURBED AREAS SHALL BE IN ACCORDANCE WITH THE IDAHO DEPARTMENT OF ENVIRONMENTAL QUALITY (IDEO) CATALOG OF STORM WATER BEST MANAGEMENT PRACTICES.
  - B. CONTRACTOR OR DESIGNATED PERSON SHALL BE RESPONSIBLE FOR PROPER INSTALLATION AND MAINTENANCE OF ALL EROSION AND SEDIMENT CONTROL MEASURES, IN ACCORDANCE WITH LOCAL, STATE, AND FEDERAL REGULATIONS.
  - C. THE IMPLEMENTATION OF THESE EROSION AND SEDIMENT CONTROL PLANS AND CONSTRUCTION, MAINTENANCE, REPLACEMENT, AND UPGRADING OF THESE EROSION AND SEDIMENT CONTROL PLAN FACILITIES IS THE RESPONSIBILITY OF THE CONTRACTOR UNTIL ALL CONSTRUCTION IS COMPLETED AND APPROVED BY THE LOCAL JURISDICTION, AND VEGETATION/LANDSCAPING IS ESTABLISHED. THE DEVELOPER SHALL BE RESPONSIBLE FOR MAINTENANCE AFTER THE PROJECT IS APPROVED.
  - D. THE BOUNDARIES OF THE CLEARING LIMITS SHOWN ON THIS PLAN SHALL BE CLEARLY MARKED IN THE FIELD PRIOR TO CONSTRUCTION. DURING THE CONSTRUCTION PERIOD, NO DISTURBANCE BEYOND THE CLEARING LIMITS SHALL BE PERMITTED. THE MARKINGS SHALL BE MAINTAINED BY THE CONTRACTOR FOR THE DURATION OF CONSTRUCTION.
  - E. THE EROSION AND SEDIMENT CONTROL FACILITIES SHOWN ON THIS PLAN MUST BE CONSTRUCTED IN CONJUNCTION WITH ALL CLEARING AND GRADING ACTIVITIES, AND IN SUCH A MANNER AS TO INSURE THAT SEDIMENT AND SEDIMENT LADEN WATER DOES NOT ENTER THE DRAINAGE SYSTEM, ROADWAYS, ADJACENT OPEN WATER SURFACES OR VIOLATE APPLICABLE WATER STANDARDS.
  - F. THE EROSION AND SEDIMENT CONTROL FACILITIES SHOWN ON THIS PLAN ARE MINIMUM REQUIREMENTS FOR ANTICIPATED SITE CONDITIONS. DURING CONSTRUCTION PERIOD, THESE EROSION AND SEDIMENT CONTROL FACILITIES SHALL BE UPGRADED AS NEEDED FOR UNEXPECTED STORM EVENTS AND TO ENSURE THAT SEDIMENT AND SEDIMENT LADEN WATER DOES NOT LEAVE THE SITE.
  - G. ALL CATCH BASINS AND CONVEYANCE LINES SHALL BE CLEANED PRIOR TO PAVING. THE CLEANING OPERATIONS SHALL NOT FLUSH SEDIMENT-LADEN WATER INTO THE DOWNSTEAM SYSTEM.
  - H. STORM DRAIN INLETS, BASKS, AND AREA GRABS SHALL BE PROTECTED UNTIL PAVEMENT SURFACES ARE COMPLETED AND/OR VEGETATION IS RE-ESTABLISHED.
  - I. PAVEMENT SURFACES AND VEGETATION ARE TO BE PLACED AS RAPIDLY AS POSSIBLE.
  - J. CONCRETE WASHOUT MUST BE CONTAINED IN AN ABOVE GROUND CONTAINER PER IDEO STORM WATER BMP #13.
- STOCKPILES NOTES:**
- K. STOCKPILES SHALL BE STABILIZED (WITH PLASTIC COVERING OR OTHER APPROVED DEVICE) DAILY BETWEEN NOVEMBER 1 AND MARCH 31.
  - L. IN ANY SEASON, SEDIMENT LEACHING FROM STOCKPILES MUST BE PREVENTED.
- STORM WATER NOTES:**
- M. OPERATORS ARE RESPONSIBLE TO PREPARE AND FILE A NOTICE OF INTENT (NOI) AS REQUIRED BY IDEO AND DEVELOP A PROJECT SPECIFIC STORM WATER POLLUTION PREVENTION PLAN (SWPPP).
  - N. ALL WORKMANSHIP AND MATERIALS SHALL BE IN ACCORDANCE WITH THE IDAHO DEPARTMENT OF ENVIRONMENTAL QUALITY (IDEO) CATALOG OF STORM WATER BEST MANAGEMENT PRACTICES.
  - O. SHOULD THE TEMPORARY EROSION AND SEDIMENTATION CONTROL MEASURES AS SHOWN ON THIS DRAWING NOT PROVE ADEQUATE TO CONTROL EROSION AND SEDIMENTATION, THE CONTRACTOR SHALL INSTALL ADDITIONAL FACILITIES AS NECESSARY TO PROTECT ADJACENT PROPERTIES, SENSITIVE AREAS, NATURAL WATER COURSES, AND/OR STORM DRAINAGE SYSTEMS.
  - P. THE CONTRACTOR SHALL CALL DIGLINE (1-208-342-1585) AND HAVE THE LOCATION OF EXISTING UTILITIES MARKED A MINIMUM OF 48 HOURS PRIOR TO ANY EXCAVATIONS.
  - Q. ALL EROSION CONTROL AND STORM WATER FACILITIES SHALL BE REGULARLY INSPECTED AND MAINTAINED BY THE CONTRACTOR DURING CONSTRUCTION.
  - R. IT SHALL BE THE SOLE RESPONSIBILITY OF THE CONTRACTOR TO OBTAIN STREET USE AND OTHER RELATED OR REQUIRED PERMITS PRIOR TO ANY CONSTRUCTION ACTIVITY IN THE MUNICIPALITY'S RIGHT-OF-WAY. IT SHALL ALSO BE THE RESPONSIBILITY OF THE CONTRACTOR TO OBTAIN ALL REQUIRED PERMITS PRIOR TO ANY CONSTRUCTION. THE CONTRACTOR SHALL ADOBE BY ALL REQUIREMENTS FOR TRAFFIC CONTROL AND SAFETY WHEN WORKING IN THE ROAD RIGHT-OF-WAY.
  - S. AT NO TIME SHALL MORE THAN ONE-HALF (1/2) FOOT OF SEDIMENT BE ALLOWED TO ACCUMULATE WITHIN A PROTECTED CATCH BASIN. ALL CATCH BASINS AND CONVEYANCE LINES SHALL BE CLEANED PRIOR TO PROJECT COMPLETION. THE CLEANING OPERATION SHALL NOT FLUSH SEDIMENT-LADEN WATER INTO THE DOWNSTEAM SYSTEM.

### SHEET NOTES

1. DESIGNATED AREA FOR WASHOUTS.

### LEGEND

- AREA OF ACTIVE CONSTRUCTION/CONTRACT LIMIT LINE
- DRAINAGE ARROWS
- INLET PROTECTION PER IDEO BMP #74 OR CATCH-BASIN INSERT PER IDEO BMP #13
- SANITARY AND SEPTIC WASTE MANAGEMENT PER IDEO BMP #50

**1 EROSION AND SEDIMENT CONTROL PLAN**  
 SCALE: 1" = 20'  
 0 10 20 40 60 80  
 SCALE IN FEET



**JEFF T. WADDELL, P.E.**  
 200 BROAD STREET  
 BOISE, ID 83702  
 (208) 343-4635  
 http://www.cshoa.com

**427 Shoshone St N Twin Falls, ID**

**THERON W. WARD JUDICIAL BUILDING  
 REMODEL & EXPANSION**



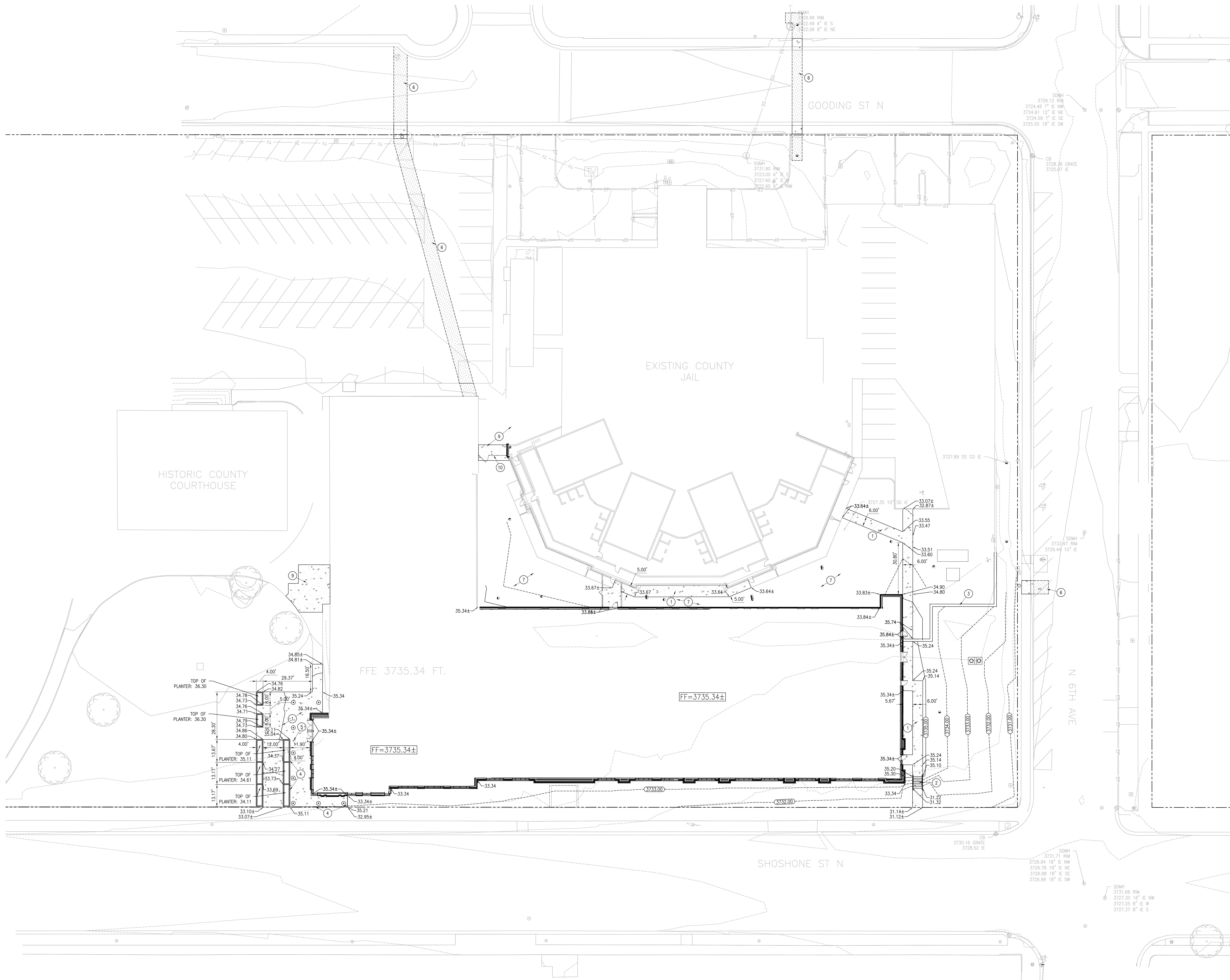
AGENCY REVIEW SET

PROJECT 21403.000	DATE 03-31-23
DRAWN JTW	CHECKED JTW
REVISED	

SHEET TITLE  
**EROSION AND  
 SEDIMENT  
 CONTROL PLAN**

SHEET

**C20**  
 ORIGINAL SHEET SIZE  
 36" x 48"



**GRADING AND DRAINAGE NOTES:**

- A. FOR GENERAL NOTES SEE DRAWING C00.
- B. IF FIELD GRADE ADJUSTMENTS ARE REQUIRED, THE CONTRACTOR SHALL NOTIFY THE ARCHITECT/ENGINEER.
- C. THE MAXIMUM CROSS SLOPE OF ANY SIDEWALK OR RAMP SHALL BE 2%.
- D. UNLESS ELEVATIONS AND/OR CONTOURS ARE OTHERWISE SHOWN, NEW ASPHALT MUST BE PLACED TO ALLOW FOR POSITIVE DRAINAGE TO CURB, GUTTER, AND OTHER RUNOFF COLLECTION DEVICES. NEW ASPHALT SLOPE TO BE MIN. 1.5% AND MAX. 5%, UNLESS OTHERWISE INDICATED OR DIRECTED BY THE ARCHITECT/ENGINEER.
- E. WATER VALVES, BLOW-OFFS, CLEANOUTS, AND MANHOLES SHALL BE PLACED SO AS TO NOT CONFLICT WITH ANY CURB, GUTTER, SIDEWALK, OR OTHER REQUIRED IMPROVEMENTS AND ADJUSTED TO MATCH FINISHED GRADE.
- F. THE EXISTING SITE INFORMATION IS PROVIDED FOR THE CONVENIENCE OF THE CONTRACTOR. CONTRACTOR SHALL FIELD VERIFY EXISTING CONDITIONS.
- G. REFER TO TOPOGRAPHIC SURVEY FOR PROJECT BENCHMARK.

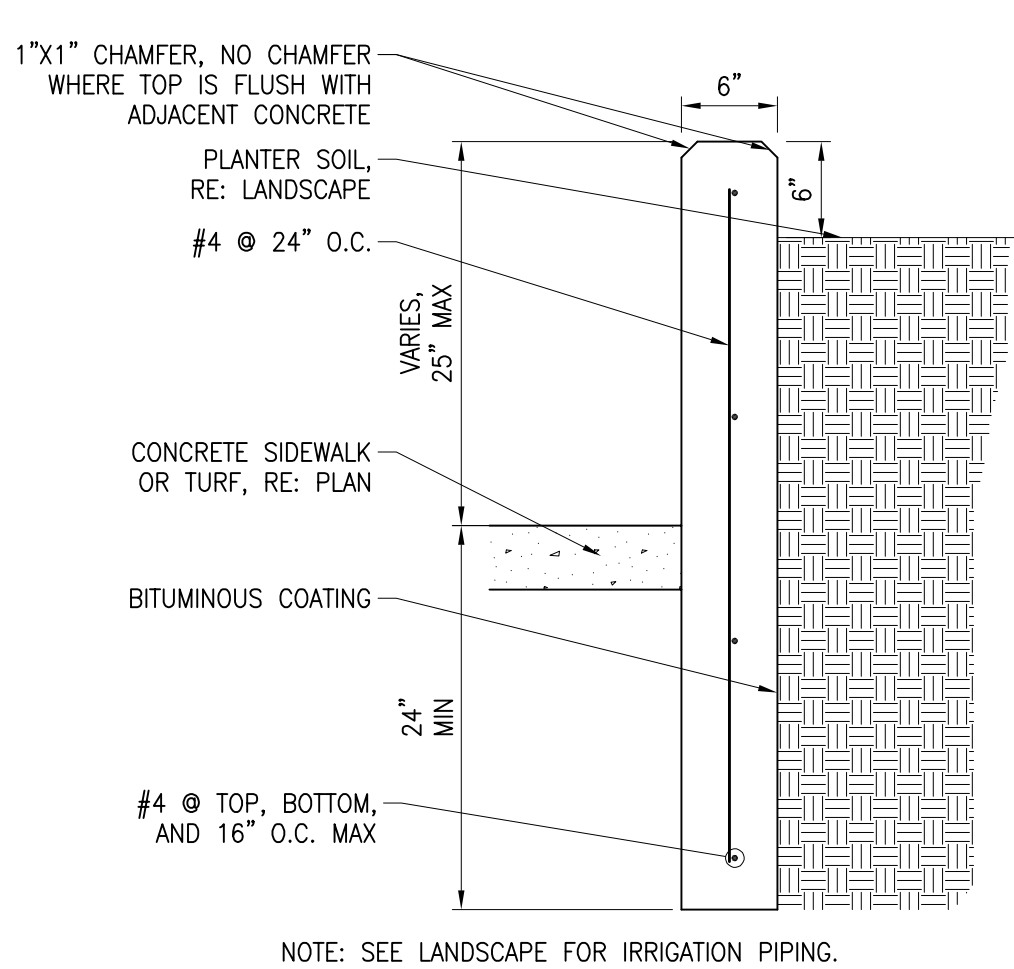
**LEGEND:**

- 33.31 EDGE OF PAVEMENT/CONCRETE/GROUND, UNLESS OTHERWISE NOTED. ADD 3700 FOR TRUE ELEVATION

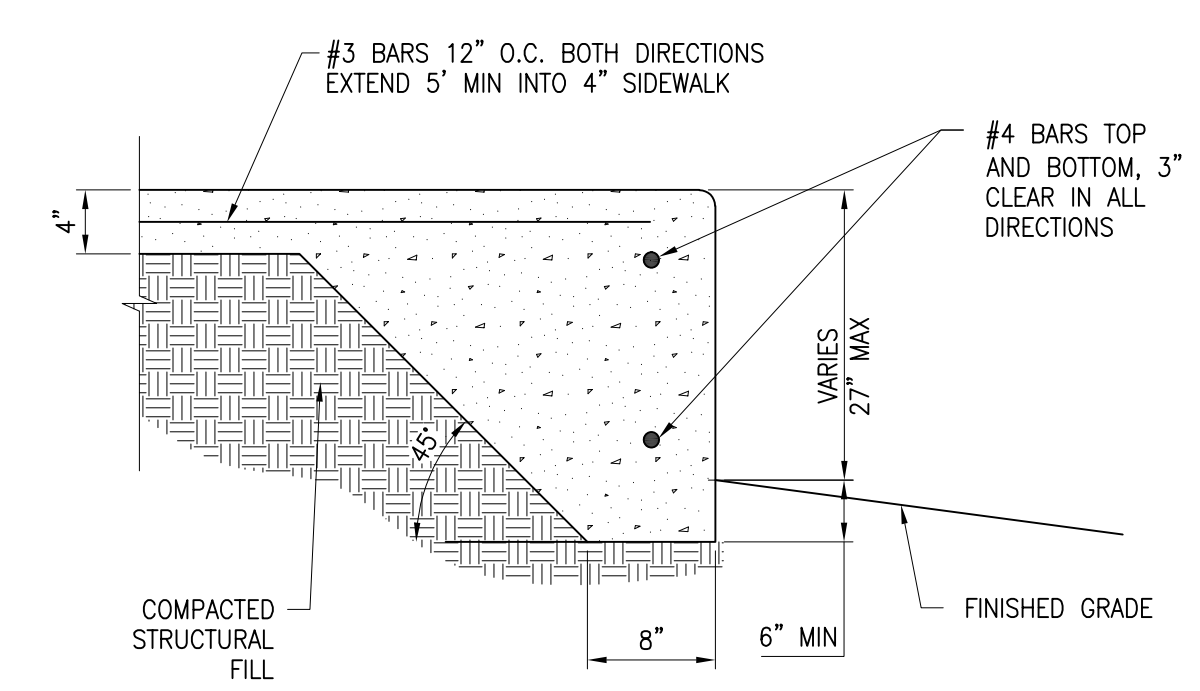
**Ⓜ SHEET NOTES:**

1. CONCRETE SIDEWALK PER CITY OF TWIN FALLS TFSD-709.
2. CONCRETE STEPS SIMILAR TO ISFMC SS-713, RE: 1-3" STAINLESS STEEL HANDRAIL ASSEMBLY TO COMPLY WITH ANSI 177.1, SECTION 505 TO BE SET 3" ABOVE STAIR NOSING WITH 12" MIN LONG HORIZONTAL HANDRAIL EXTENSIONS, RE: A41C-12.
3. SECURITY FENCING PER A50-1.
4. RAISED WALK EDGE, RE: C40-3.
5. APPROXIMATE LOCATION OF ADA ACTUATOR POST, RE: ARCHITECTURAL.
6. STREET CUT AND SURFACE REPAIR PER CITY OF TWIN FALLS TFSD-303, RE: C50 FOR ASSOCIATED UTILITY WORK.
7. GRADE AREA TO PROVIDE POSITIVE DRAINAGE AWAY FROM SURROUNDING BUILDINGS. FINISHED SURFACE TO BE THE ROCK MATCH LOCATED IN THIS AREA PRIOR TO PROJECT, RE: C10 SHEET NOTE #9.
8. PLANTER WALL TOP OF WALL ELEVATION PER PLAN. SIDE OF PLANTER WALL DIRECTLY ADJACENT TO RAISED WALK EDGE (SHEET NOTE #4) HEIGHT SHALL MATCH THE RAISED WALK EDGE.
9. PLACE CONCRETE SIDEWALK SIMILAR TO CITY OF TWIN FALLS TFSD-709 IN AREAS IMPACTED BY DEMOLITION, ENSURE POSITIVE DRAINAGE AWAY FROM STRUCTURES.
10. FENCING AND GATE, RE: ARCHITECTURAL.

**1 GRADING AND DRAINAGE PLAN**  
SCALE: 1" = 20'



**2 PLANTER WALL**  
SCALE NOT TO SCALE



**3 RAISED WALK EDGE**  
SCALE NOT TO SCALE



JEFF T. WADDELL, P.E.  
200 BROAD STREET  
BOISE, ID 83702  
PHONE: 208-343-4635 • FAX: 208-343-1808  
http://www.cshoa.com

**427 Shoshone St N Twin Falls, ID**  
200 BROAD STREET  
BOISE, ID 83702  
PHONE: 208-343-4635 • FAX: 208-343-1808  
http://www.cshoa.com

**THERON W. WARD JUDICIAL BUILDING  
REMODEL & EXPANSION**  
**CSHOA**

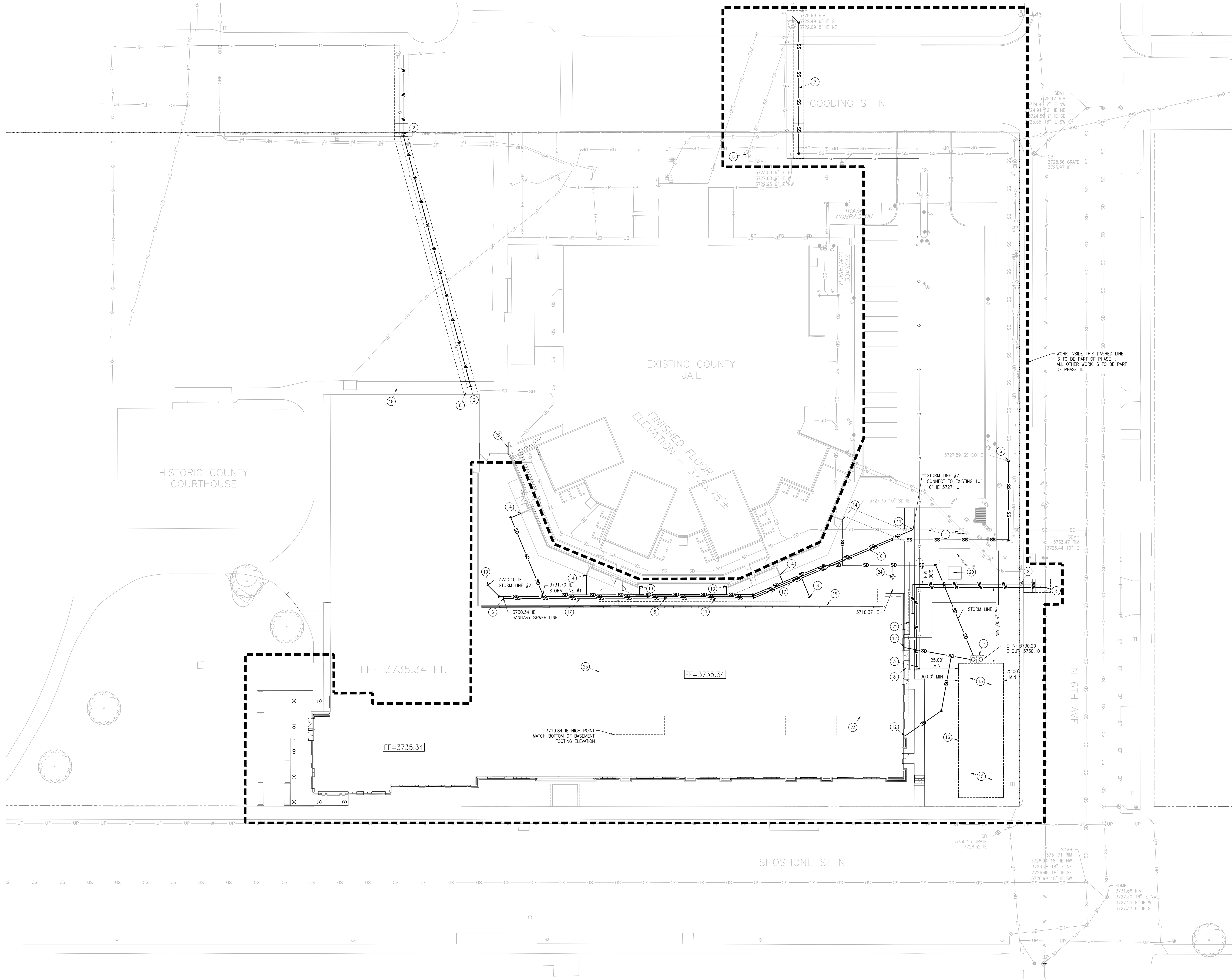
AGENCY  
REVIEW SET

PROJECT 21403.000	DATE 03-31-23
DRAWN JTW	CHECKED JTW
REVISED	

SHEET TITLE  
**GRADING  
AND SITE  
PLAN**

SHEET

**C40**  
ORIGINAL SHEET SIZE  
36" x 48"



**1 UTILITY PLAN**  
SCALE: 1" = 20'  
0 10 20 40 60 80  
SCALE IN FEET

**UTILITY NOTES:**

- A. FOR GENERAL NOTES SEE CDD.
- B. UTILITY TRENCHING AND BACKFILLING SHALL BE IN ACCORDANCE WITH THE SOILS REPORT AND LOCAL REQUIREMENTS, AND SHALL COMPLY WITH ALL LOCAL, STATE, AND NATIONAL SAFETY STANDARDS, RE: CITY OF TWIN FALLS TFSD-301.
- C. STREET CUTS AND SURFACE REPAIRS PER CITY OF TWIN FALLS TFSD-303.
- D. WATER LINES SHALL BE INSTALLED WITH AT LEAST 30" COVER.
- E. PLACE THRUST BLOCKS AT EACH ANGLED FITTING, TEE, CROSS, REDUCER, CAP, PLUG AND VALVE IN ACCORDANCE WITH ISPIC STANDARD DRAWING SD-403.
- F. WATER VALVES, BLOW-OFFS, CLEANOUTS, AND MANHOLES SHALL BE PLACED SO AS TO NOT CONFLICT WITH ANY CURB, GUTTER, SIDEWALK, OR OTHER REQUIRED IMPROVEMENTS.
- G. COORDINATE WITH OTHER DISCIPLINES FOR CONDUIT LOCATIONS.
- H. POLYETHYLENE (PE) PIPE USED FOR STORM DRAINAGE SHALL BE HIGH DENSITY (HANCOR HI-0 OR ADS N-12), UNLESS OTHERWISE NOTED. STORM LINES SHALL HAVE NO LESS THAN 12" OF COVER.
- I. INFORMATION REGARDING EXACT LOCATION AND DEPTH OF STORM AND SANITARY SEWER ON SITE FOR PURPOSE OF DESIGN IS VERY LIMITED. CONTRACTOR TO VERIFY LOCATION AND DEPTH TO VERIFY DESIGN INTENT CAN BE MET AT PROJECT COMMENCEMENT AND INFORM THE ENGINEER IMMEDIATELY IF ALTERNATE SOLUTION(S) ARE NECESSARY.
- J. CONSTRUCTION OF THE WATER SYSTEM SHALL CONFORM TO THE STANDARDS IN THE IDAHO RULES FOR PUBLIC DRINKING WATER SYSTEMS (IDAPA 58.01.00) AS WELL AS THE STANDARDS AND SPECIFICATIONS REFERRED TO IN GENERAL NOTE A ON THIS SHEET.
- K. THE HORIZONTAL SEPARATION OF POTABLE WATER MAIN AND NON-POTABLE WATER MAINS (SANITARY SEWER, IRRIGATION, AND STORM DRAIN) SHALL BE A MINIMUM OF TEN FEET. WHERE IT IS NECESSARY FOR A POTABLE WATER MAIN AND NON-POTABLE WATER MAIN TO CROSS WITH LESS THAN EIGHTEEN INCHES OF VERTICAL SEPARATION, THE CROSSING SHALL BE CONSTRUCTED IN ACCORDANCE WITH SECTION 542.07 OF THE IDAHO RULES FOR PUBLIC DRINKING WATER SYSTEMS (IDAPA 58.01.00) AND SECTION 430.02 OF THE WASTEWATER RULES (IDAPA 58.01.16).
- L. THE HORIZONTAL SEPARATION OF POTABLE WATER SERVICES OR POTABLE WATER MAINS AND NON-POTABLE WATER SERVICES (SANITARY SEWER, IRRIGATION, AND STORM DRAIN) SHALL BE A MINIMUM OF SIX FEET. WHERE IT IS NECESSARY FOR A POTABLE WATER MAIN AND NON-POTABLE WATER MAIN TO CROSS WITH LESS THAN EIGHTEEN INCHES OF VERTICAL SEPARATION, THE CROSSING SHALL BE CONSTRUCTED IN ACCORDANCE WITH SECTION 542.07 OF THE IDAHO RULES FOR PUBLIC DRINKING WATER SYSTEMS (IDAPA 58.01.00) AND SECTION 430.02 OF THE WASTEWATER RULES (IDAPA 58.01.16).
- M. THE CONTRACTOR TO CONTACT THE CITY (AND THIRD PARTY TESTING AGENCY IF DESIGN ENGINEER OBSERVATION IS REQUIRED BY CITY) FOR OBSERVATION OF ALL STORM WATER FACILITIES PRIOR TO BACKFILL. MINIMUM 48-HOUR NOTICE IS REQUIRED. APPROVAL IS CONTINGENT UPON OBSERVATION.

**EXISTING FIRE HYDRANTS**

- NEARBY FIRE HYDRANTS:
- SW CORNER OF SHOSHONE AND 4TH
  - NW CORNER OF GOODING AND 4TH
  - NW CORNER OF GOODING AND 6TH
  - SW CORNER OF SHOSHONE AND 6TH

**BASE BID**

COORDINATE SMALL SCALE INFILTRATION TESTING WITH STRATA AFTER EXCAVATION TO APPROPRIATE DEPTH FOR BASEMENT FOOTINGS TO DETERMINE IF ALTERNATE FOUNDATION DRAIN MEASURES ARE REQUIRED.

**1 SHEET NOTES:**

1. EXISTING UTILITIES TO REMAIN AND BE PROTECTED.
2. 2" WATER SERVICE CONNECTION PER CITY OF TWIN FALLS TFSD-402A. COORDINATE EXACT LOCATION OF BUILDING CONNECTION WITH PLUMBING.
3. CONNECT NEW 6" FIRE SERVICE TO EXISTING MAIN PER CITY OF TWIN FALLS REQUIREMENTS. REAL/TEST/FLUSH PER WFA 24 MIN 5" COVER. COORDINATE EXACT LOCATION OF BUILDING CONNECTION WITH PLUMBING AND FIRE PROTECTION.
4. NOT USED.
5. EXISTING MANHOLE, PLUG EAST INLET BEING ABANDONED, RE: C10.
6. 6" SDR 35 SANITARY SEWER SERVICE PER CITY OF TWIN FALLS TFSD-511. 1.00% SLOPE MIN. TYPE BEDDING WITH CLASS A-1 BEDDING SYSTEM AS DEFINED IN THE ISPIC. ALL SEWER TRENCHES SHALL BE BACKFILLED IN ACCORDANCE WITH THE TYPE A-1 BACKFILL SPECIFICATIONS OF THE ISPIC. PROVIDE CLEANOUTS PER ISPIC SD-506A AT EVERY CHANGE OF DIRECTION REQUIRED BY PLUMBING CODE, SIMILAR TO WHAT IS SHOWN.
7. 6" SDR 35 SANITARY SEWER SERVICE CONNECTION PER CITY OF TWIN FALLS TFSD-511. (OR STATE ANTICIPATED) CONTRACTOR TO FIELD LOCATE EXISTING SERVICE ON COUNTY PROPERTY AND FIELD VERIFY DEPTH OF MAIN AT CONNECTION POINT DOWNSTREAM OF EXISTING MANHOLE. TYPE I BEDDING WITH CLASS A-1 BEDDING SYSTEM AS DEFINED IN THE ISPIC. ALL SEWER TRENCHES SHALL BE BACKFILLED IN ACCORDANCE WITH THE TYPE A-1 BACKFILL SPECIFICATIONS OF THE ISPIC. PROVIDE CLEANOUTS PER ISPIC SD-506A AT EVERY CHANGE OF DIRECTION REQUIRED BY PLUMBING CODE, SIMILAR TO WHAT IS SHOWN.
8. APPROXIMATE LOCATION OF GAS METER. COORDINATE EXACT LOCATION WITH PLUMBING. ROUTING SHOW APPROXIMATE. COORDINATE WITH PROVIDER FOR SERVICE LINE ROUTING AND CONNECTION.
9. 1000 GALLON SAND AND GREASE TRAP PER ISPIC SD-624. SET RIMS AT FINISHED GRADE.
10. PROVIDE FITTINGS AS REQUIRED TO CONNECT TO ROOF DRAIN, RE: PLUMBING FOR EXACT LOCATION.
11. PROVIDE FITTINGS AS REQUIRED TO CONNECT TO EXISTING 10" STORM LINE. FIELD VERIFY LOCATION AND INVERT.
12. 6" NYLOPLAST DOWNSPOUT ADAPTER PLACED FLUSH WITH SURROUNDING GRADE. COORDINATE EXACT LOCATION WITH PLUMBING. PROVIDE PIPE AND FITTINGS AS REQUIRED TO CONNECT ADAPTER TO INLET SIDE OF SAND AND GREASE TRAP. SIMILAR TO WHAT IS SHOWN IN PLAN.
13. INSTALL NYLOPLAST DOWNSPOUT ADAPTER PLACED FLUSH WITH SURROUNDING GRADE. COORDINATE SIZE WITH EXISTING DOWNSPOUT. PROVIDE PIPE AND FITTINGS AS REQUIRED TO CONNECT TO STORM DRAIN #1.
14. INSTALL ACC K1 ENDCAP ON EXISTING TRENCH DRAIN, PROVIDE PIPE AND FITTINGS AS REQUIRED TO CONNECT TO STORM DRAIN #1.
15. INFILTRATION FACILITY AREA. HIGHER INFILTRATION RATES ARE REQUIRED. SEE "INFILTRATION TESTING SUMMARY" BY STRATA DATED 12/16/2022. PRIOR TO PROCEEDING WITH DESCRIBED DRILLING PROCEDURE COORDINATE SMALL SCALE TESTING WITH STRATA. HOLES SHALL EXTEND TO A DEPTH OF APPROXIMATELY 17' BELOW EXISTING GRADE AND NOT EXCEED 18" TO AVOID IDAHO DEPARTMENT OF WATER RESOURCES PERMITTING. IF STRATA'S TESTING DETERMINES THE INFILTRATION IS INADEQUATE THEN ADDITIONAL MEASURES MAY BE REQUIRED. IF TESTING DETERMINES ADEQUATE INFILTRATION RATE CONSTRUCTION OF FACILITY IN SHEET NOTE #16 CAN PROCEED.
16. RAINSTORES BY INVISIBLE STRUCTURES FACILITY INSTALLED PER MANUFACTURER RECOMMENDATIONS. SYSTEM SHALL CONSIST OF 8 UNITS BY 23 UNITS, 3.94 HIGH. LOCAL DISTRIBUTOR IS GERRA. CONTACT KEVIN PFEIFFER OR TRAMAY EASTMAN (360-750-1955). BOTTOM OF SYSTEM TO BE INSTALLED OVER THE REQUIRED 12" LAYER OF C-35 SAND PLACED OVER THE NATIVE BASEL. ALTERNATE SYSTEMS PROPOSED BY THE CONTRACTOR WILL BE CONSIDERED, SYSTEMS PROVIDED THROUGH THE DESIGN TEAM. PROVIDE THE VERTICAL AND HORIZONTAL CONSTRAINTS OF THE SITE, AND BE SUBMITTED TO THE ENGINEER FOR REVIEW AND APPROVAL.
17. STORM AND SANITARY SEWER LINE CORRIDOR CENTERED BETWEEN BUILDINGS. LINES TO BE PLACED AS CLOSE TO EACH OTHER HORIZONTALLY AS POSSIBLE. MAINTAIN AT LEAST 1" SEPARATION. STORM LINE #1: 6" W/ SLOPE NO LESS THAN 0.25% COLLECTS THE DOWNSPOUTS FROM THE EXISTING JAIL. ADDITION PROJECT AND CONVEYS THAT WATER TO THE NEW RAINSTORES FACILITY. THIS LINE SHOULD PASS OVER THE TOP OF THE OTHERS WHERE SHOWN IN PLAN. STORM LINE #2: 6" W/ SLOPE NO LESS THAN 0.25% AND DECALLY MATCHING SLOPE OF SANITARY SEWER LINE. CONVEYS STORM WATER FROM EXISTING JAIL. ADDITION BUILDING #2 DRAIN TO THE EXISTING LINE THAT CONNECTS TO THE PUBLIC SYSTEM IN 6TH. THE SANITARY LINE IN SHEET NOTE #16, COMBINES THE THREE BUILDING ADDITION CONNECTIONS AND CONVEYS TO THE EXISTING 6" LINE SOUTH EAST OF THE JAIL. CONTRACTOR TO FIELD VERIFY EXISTING. COORDINATE WITH PLUMBING PRIOR TO PLACING ANY PIPE. CONTACT ENGINEER IMMEDIATELY IF INVERT AT CONNECTION POINT TO SANITARY SEWER IS DEEPER THAN 3027.89 AS PROVIDED BY CIVIL SERVICE VIA EMAIL ON 3/31/23. ENGINEER TO PROVIDE CONTINUOUS SERVICE FROM JAIL FOR PROVIDE CLEANOUTS PER ISPIC SD-506A AT INTERVALS NO GREATER THAN 100' AND AT EVERY CHANGE OF DIRECTION REQUIRED BY PLUMBING CODE.
18. FIELD VERIFY LOCATION AND DEPTH OF EXISTING SANITARY SEWER SERVICE. COORDINATE WITH PLUMBING DRAWINGS FOR DESIGNED LOCATION AND INVERT. CONTACT ENGINEER IMMEDIATELY IF EXISTING INVERT CONFLICTS WITH PLUMBING DESIGNED INVERT OF 3029.10. PROVIDE FITTINGS AND PIPE AS REQUIRED TO RECONNECT REMODELED BUILDING.
19. APPROXIMATE LOCATION OF COMMUNICATIONS ENTRANCE TO DENKAR ROOM 10.106. COORDINATE EXACT LOCATION REQUIREMENTS WITH LOW VOLTAGE. COORDINATE WITH PROVIDERS FOR SERVICE LINE ROUTING AND CONNECTION.
20. APPROXIMATE LOCATION OF NEW TRANSFORMER AND GENERATOR. EXACT LOCATION AND SIZE TO BE DETERMINED BY IDAHO POWER AND AS REQUIRED BY SELECTED GENERATOR MANUFACTURER. ENSURE EQUIPMENT REQUIRED SEPARATION. NEITHER UNIT SHALL BE PLACED WITHIN 6' OF PERIMETER FENCING. SEE 542-11 FOR PAD SECTION.
21. COORDINATE GAS LINE TO GENERATOR WITH PLUMBING.
22. LOW VOLTAGE AND AIR LINE EXITING JAIL AND RUNNING TO BUILDING ADDITION. COORDINATE WITH DESIGN BUILD SUBCONTRACTOR PERFORMING THIS WORK.

**1 BID ALTERNATE #3**

23. 4" PERFORATED SDR 35 PLACED WITH OUTSIDE WALL 18" FROM FACE OF BASEMENT FOOTING. PIPE SHALL BE PLACED IN 3" DRAIN ROCK (SPIC 801) WRAPPED IN MESH THIN FILTER FABRIC (OR APPROVED EQUAL). PIPE TO SLOPE 0.5% FROM INDICATED HIGH POINT TO PUMP STATION. SEE A11-1A2 FOR PIPE LOCATION AND ROCK WRAPPED IN FABRIC CONFIGURATION.
24. PREASSEMBLED SHARPE EFFLUENT SYSTEM BY LIBERTY PUMPS MODEL #EP510260 REV A. CONTACT LAKE CARPINO (1-800-943-2500). COORDINATE POWER AND CONTROL PANEL LOCATION WITH ELECTRICAL. LD ELEVATION: 3733.85, INVERT IN: 3784.35, CONNECT 2" DISCHARGE PIPE TO STORM LINE #1.



**JEFF T. WARD, P.E.**  
200 BROAD STREET  
BOISE, ID 83702  
(208) 343-4635  
http://www.cshoa.com

**427 Shoshone St N Twin Falls, ID**

**THERON W. WARD JUDICIAL BUILDING  
REMODEL & EXPANSION**



**AGENCY REVIEW SET**

PROJECT	DATE
21403.000	03-31-23
DRAWN	CHECKED
JTW	JTW
REVISED	

SHEET TITLE  
**UTILITY PLAN**

SHEET

**C50**

ORIGINAL SHEET SIZE  
36" x 48"